

job name:   
 type:

## 8" imago™ spec sheet 90CRI

### driver housing / power head

4" dia. extruded aluminum with silver anodized or black anodized finish, acts as heat sink as well. also available in painted finishes listed below.

### diffuser

parabolic Satinice optimum light diffusion acrylic.

### optics

340° omnidirectional silicone optic.

### bottom lens (optional)

P95 frosted acrylic bottom lens solvent welded to bottom of parabolic diffuser.

### LED module

COB array in 2700K, 3000K, 3500K, or 4000K. (call factory for 5000K) 90+ cri standard. under normal operating conditions, the LEDs employed are rated for >50,000hrs L70 (6.8K) per IES TM-21 from LM-80 test data.

### driver

integral, programmable, UL class P, class 2, universal input (120-277v), constant current, 0-10v dimming, 1% minimum dimming level, PF >.9, THD <20%, protections include open and short circuit, overload and over temperature.

### mounting

5" dia. spun steel canopy in satin white with single or optional dual stainless steel cables and field adjustable grippers that allow for exact AFF mounting heights.

### premium mountings

#### colored cloth cord (optional)

extruded aluminum canopy painted to match fixture. ultrathin vertical stainless steel cable and field adjustable gripper that allow for exact AFF mounting heights. cloth-covered power cord color options listed below. cord requires special stripping tool (link).

#### power over cable (optional)

extruded aluminum canopy painted to match fixture. Class 2 LED powered suspension system that suspends and powers the fixture with thin stainless steel copper-core conductive cables, providing a clean look without the need for a separate power cord. powered suspension requires cable cutter (link) specifically designed to cut stainless steel aircraft cable from 1/32" to 1/8".

### emergency

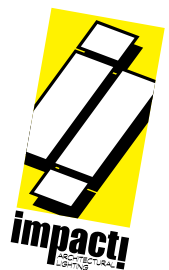
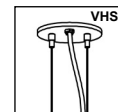
recommend use of inverter (by other). optional WREM: wired for remote EM battery (by other). if using WHPC, SBPC, or BKPC cords, 2nd power cord required.



## catalog number

P3508					
-------	--	--	--	--	--

size	CCT	lumens	anodized finishes	power cord	options
<b>P3508</b> 8" dia X 16" ht  <small>See p.2 for info on P3512</small>	<b>27</b> 2700K <b>30</b> 3000K <b>35</b> 3500K <b>40</b> 4000K	<b>FX</b> 1535 lm <b>LO</b> 2165 lm <b>HI</b> 2980 lm <b>HX</b> 3790 lm  <b>CL*</b> xxxx lm <small>* custom lumens consult factory</small>	<b>AN</b> silver anodized <b>ANB</b> anodized black  <b>painted finish</b> <b>BS</b> brass <b>BU</b> blue <b>BZ</b> bronze <b>CP</b> champagne <b>GM</b> gun metal <b>MB</b> military blue <b>MW</b> matte white <b>OR</b> orange <b>RD</b> red <b>SS</b> satin silver <b>TG</b> textured gray <b>YO</b> yellow  <b>premium finish</b> <b>RAL</b> specify RAL#	<b>WHPC</b> white power cord and canopy <b>BKPC</b> black power cord and canopy <b>SBPC</b> silver braid power cord and white canopy  <b>premium</b> (driver canopy required) (not available w/ 12ft option) <b>BUPC</b> blue cloth cord <b>ORPC</b> orange cloth cord <b>PLPC</b> purple cloth cord <b>RDPC</b> red cloth cord <b>WGPC</b> white & gray dot cloth cord <b>POC</b> power over cable	<b>3FT</b> 36" cable <b>6FT</b> 72" cable <b>12FT</b> 144" cable* <small>*not available with premium power cords</small> <b>BL</b> frosted acrylic bottom lens <b>VHS</b> 2-point vertical hanging system <b>WREM</b> wired for remote EM battery pack (by other) (see note above) <b>ELD</b> EldoLED** <b>LUT</b> Lutron** <small>**consult factory</small>



job name:   
 type:

# 12" imago™ spec sheet 90CRI

**driver housing / power head**

4" dia. extruded aluminum with silver anodized or black anodized finish, acts as heat sink as well. also available in painted finishes listed below.

**diffuser**

parabolic Satinice optimum light diffusion acrylic.

**optics**

340° omnidirectional silicone optic.

**bottom lens** (optional)

P95 frosted acrylic bottom lens solvent welded to bottom of parabolic diffuser.

**LED module**

COB array in 2700K, 3000K, 3500K, or 4000K. (call factory for 5000K) 90+ cri standard. under normal operating conditions, the LEDs employed are rated for >50,000hrs L70 (6.8K) per IES TM-21 from LM-80 test data.

**driver**

integral, programmable, UL class P, class 2, universal input (120-277v), constant current, 0-10v dimming, 1% minimum dimming level, PF >.9, THD <20%, protections include open and short circuit, overload and over temperature.

**mounting**

5" dia. spun steel canopy in satin white with single or dual stainless steel cables and field adjustable grippers that allow for exact AFF mounting heights.

**premium mountings**

**colored cloth cord** (optional)

extruded aluminum canopy painted to match fixture. ultrathin vertical stainless steel cable and field adjustable gripper that allow for exact AFF mounting heights. cloth-covered power cord color options listed below. cord requires special stripping tool (link).

**power over cable** (optional)

extruded aluminum canopy painted to match fixture. Class 2 LED powered suspension system that suspends and powers the fixture with thin stainless steel copper-core conductive cables, providing a clean look without the need for a separate power cord. powered suspension requires cable cutter (link) specifically designed to cut stainless steel aircraft cable from 1/32" to 1/8".

**emergency**

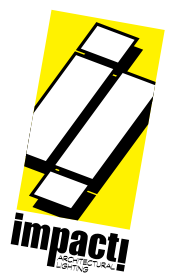
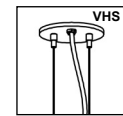
recommend use of inverter (by other). optional WREM: wired for remote EM battery (by other). if using WHPC, SBPC, or BKPC cords, 2nd power cord required.

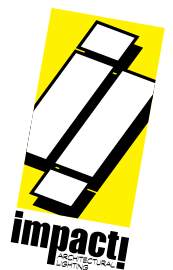
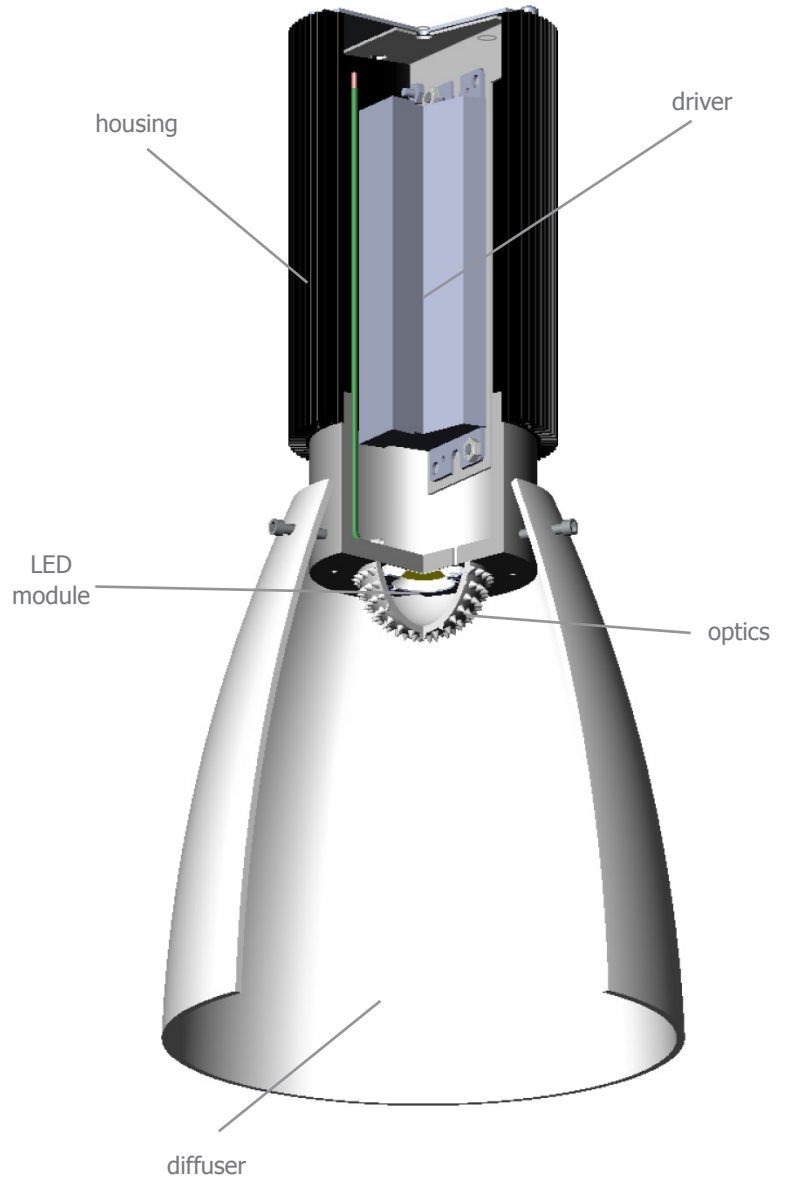
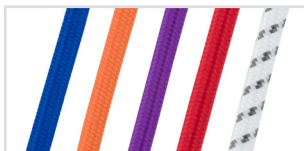
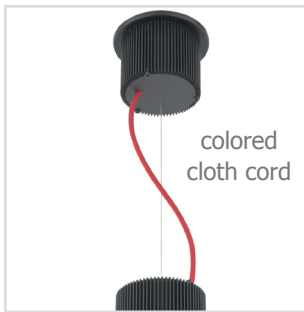
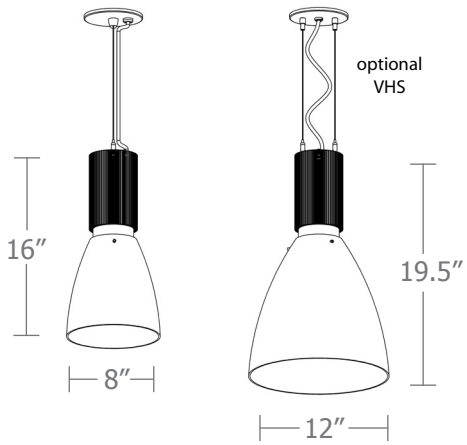


## catalog number


P3512					
-------	--	--	--	--	--

size	CCT	lumens	anodized finishes	power cord	options
<b>P3512</b> 12"dia X 19.5"ht	<b>27</b> 2700K	<b>FX</b> 1535 lm	<b>AN</b> silver anodized	<b>WHPC</b> white power cord and canopy	<b>3FT</b> 36" cable
	<b>30</b> 3000K	<b>LO</b> 2165 lm	<b>ANB</b> anodized black	<b>BKPC</b> black power cord and canopy	<b>6FT</b> 72" cable
	<b>35</b> 3500K	<b>HI</b> 2980 lm	<b>Painted finish</b>	<b>SBPC</b> silver braid power cord and white canopy	<b>12FT</b> 144" cable* <small>*not available with premium power cords</small>
	<b>40</b> 4000K	<b>HX</b> 3790 lm	<b>BS</b> brass	<b>premium</b> (driver canopy required) (not available w/ 12ft option)	<b>BL</b> frosted acrylic bottom lens
		<b>CL*</b> xxxx lm <small>* custom lumens consult factory</small>	<b>BU</b> blue	<b>BUPC</b> blue cloth cord	<b>VHS</b> 2-point vertical hanging system
			<b>BZ</b> bronze	<b>ORPC</b> orange cloth cord	<b>WREM</b> wired for remote EM battery pack (by other) (see note above)
			<b>CP</b> champagne	<b>PLPC</b> purple cloth cord	<b>ELD</b> EldoLED**
			<b>GM</b> gun metal	<b>RDPC</b> red cloth cord	<b>LUT</b> Lutron** <small>**consult factory</small>
			<b>MB</b> military blue	<b>WGPC</b> white & gray dot cloth cord	
			<b>MW</b> matte white	<b>POC</b> power over cable	
			<b>OR</b> orange		
			<b>RD</b> red		
			<b>SS</b> satin silver		
			<b>TG</b> textured gray		
			<b>YO</b> yellow		
			<b>premium finish</b>		
			<b>RAL</b> specify RAL#		



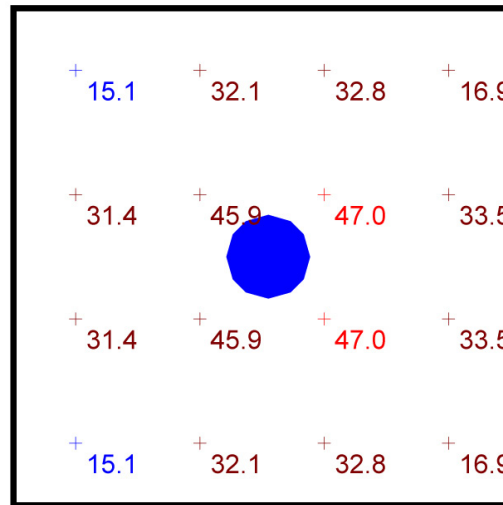


## Typical Lighting Layout

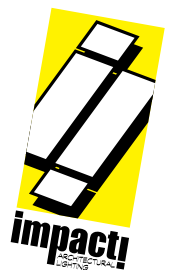
Schedule						
Symbol	QTY	Manufacturer	Catalog Number	Description	Lamp	Wattage
	1	Impact Architectural Lighting	P3512 40 HX	12" dia. pendant imago luminaire w/ open bottom	4000k 90CRI LED	38

- 8' x 8' x 12'H space
- 80/50/20 reflectances
- bottom of fixture at 10' aff
- FC readings at 2.5' aff
- layout conducted using P3512 unit with HX lumen 90 CRI package providing 3790 delivered lumens

Statistics						
Description	Symbol	Avg	Max	Min	Max/Min	Avg/Min
imago	+	31.8 fc	47.0 fc	15.1 fc	3.1:1	2.1:1



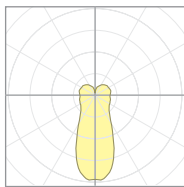
**Plan View**  
Scale - 1" = 2ft



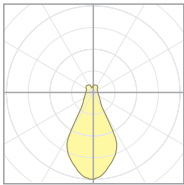
## Calculation Table

The application of a Light Loss Factor is required to:

- match the lumen output for the power module specified
- incorporate the increased lumen output due to LED/Driver upgrades



17550  
P3508-40LO-BL

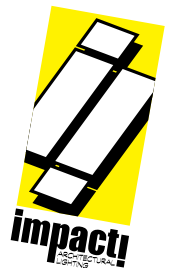


17555  
P3512-40HI

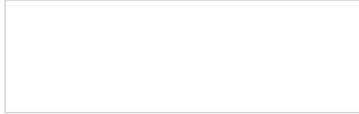
Cat No	Delivered Lumens*	Watts 120V / 277V	IES File #	LLF to be applied
<b>P3508 FX</b>	1535	14	<b>17549</b> open	.74
			<b>17550</b> lensed**	.68
<b>P3508 LO</b>	2165	20	<b>17549</b> open	1.05
			<b>17550</b> lensed**	.96
<b>P3508 HI</b>	2980	29	<b>19342</b> open	.89
			<b>19343</b> lensed**	.80
<b>P3508 HX</b>	3790	38	<b>19342</b> open	1.14
			<b>19343</b> lensed**	1.02
<b>P3512 FX</b>	1535	14	<b>19352</b> open	.81
			<b>19341</b> lensed**	.41
<b>P3512 LO</b>	2165	20	<b>19352</b> open	1.15
			<b>19341</b> lensed**	.58
<b>P3512 HI</b>	2980	29	<b>17555</b> open	.93
			<b>19341</b> lensed**	.79
<b>P3512 HX</b>	3790	38	<b>17555</b> open	1.19
			<b>19341</b> lensed**	1.01

\*delivered lumens based on 4000K, 90+ cri

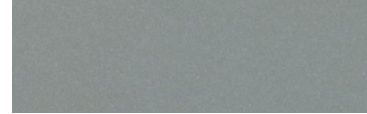
\*\*includes optional bottom lens



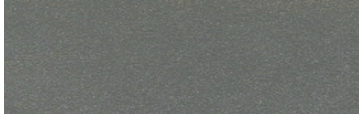
## Powder Coat Paint Finishes



**MW** matte white



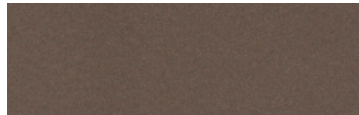
**SS** satin silver



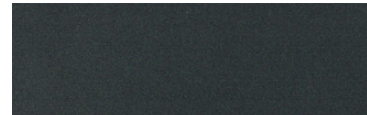
**TG** textured gray



**CP** champagne



**BZ** bronze



**GM** gun metal



**OR** orange 2011



**BU** blue 5017



**BS** brass



**RD** red 3020



**YO** yellow 1018



**MB** military blue

For accurate color verification, actual finish samples are available upon request.

## Premium Finishes\*



**RAL#**

\*Available on select series. Consult product submittal for availability.

